



**Pump Model - version**

K 50/400 T - N.4. - -

Company Name  
Reference  
Phone  
Fax  
E-mail

Attention: check the correspondence with the serial number of the pump.

Receiver

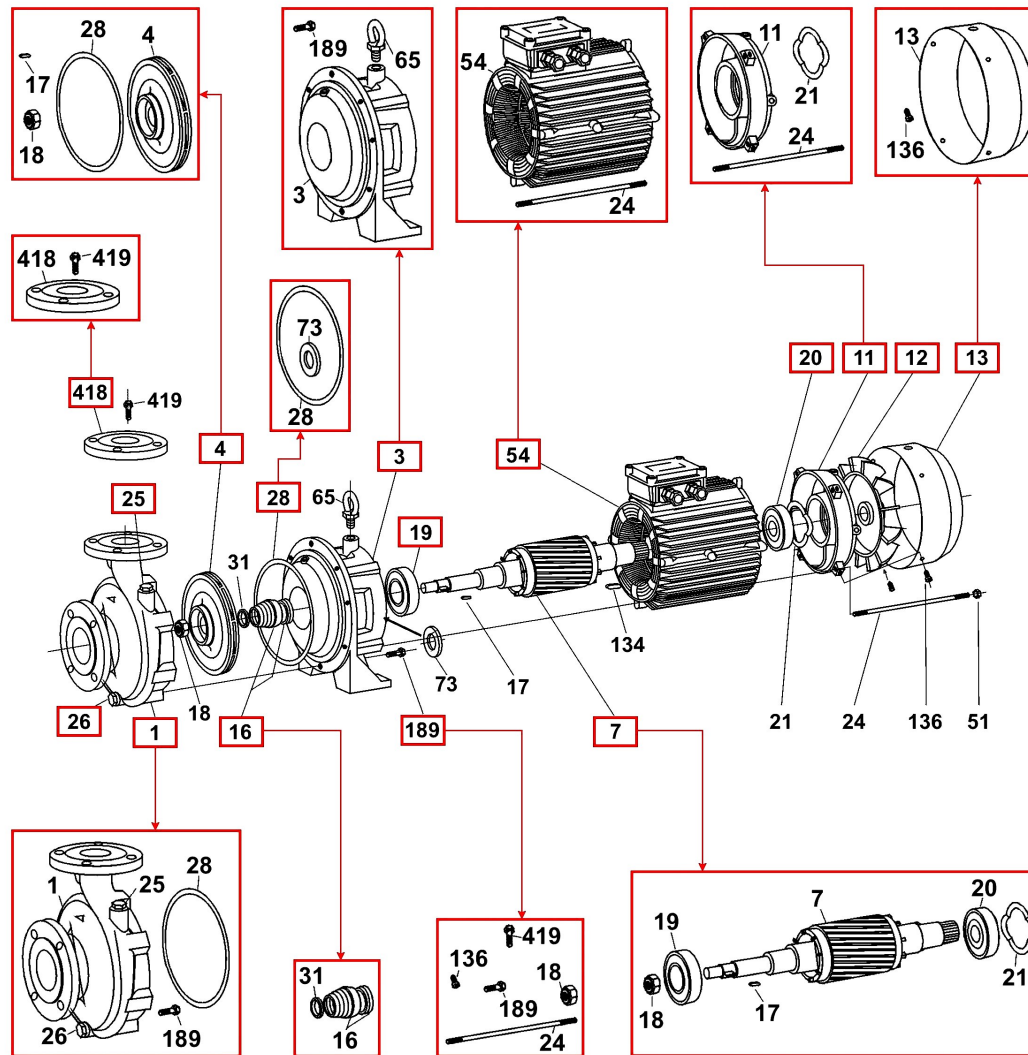
From

Serial Number

K 50/400 T - N.4. - - @ 102130040\_b

K 50/400 T @ 102130040

| Item | Q.ty | Item no.  | Description                | Unit pr. |
|------|------|-----------|----------------------------|----------|
| 1    | 1    | R00005576 | PUMP BODY                  | On req.  |
| 3    | 1    | R00005579 | SUPPORT                    | On req.  |
| 4    | 1    | R00007507 | IMPELLER                   | On req.  |
| 7    | 1    | R00005588 | MOTOR SHAFT                | On req.  |
| 11   | 1    | R00005584 | MOTOR COVER                | On req.  |
| 12   | 1    | R00005578 | FAN                        | On req.  |
| 13   | 1    | R00005577 | FAN GUARD                  | On req.  |
| 16   | 1    | R00005586 | SEAL D.28                  | On req.  |
| 19   | 1    | R00004959 | FRONT BEARING 6309-2Z/C3WT | On req.  |
| 20   | 1    | R00004960 | REAR BEARING 6308-2Z/C3WT  | On req.  |
| 25   | 1    | R00005213 | LOAD PLUG                  | On req.  |
| 26   | 1    | R00005428 | DISCHARGE PLUG             | On req.  |
| 28   | 1    | R00005581 | OR                         | On req.  |
| 54   | 1    | R00005590 | & MOTOR                    | On req.  |
| 189  | 1    | R00005582 | NUTS AND BOLTS             | On req.  |
| 418  | 1    | R00005587 | FLANGE                     | On req.  |



Project

Project ID

Created by

Created on  
2013-04-02

Last update